

RESOLUTION NO. 3640

**A RESOLUTION OF THE CITY COUNCIL OF THE CITY OF SOLEDAD
ORDERING THE LEVY AND COLLECTION OF ASSESSMENTS WITHIN THE
DIAMOND RIDGE BENEFIT ASSESSMENT DISTRICT NO. 1 FOR
FISCAL YEAR 2005/2006**

WHEREAS, the City Council has by previous Resolutions initiated proceedings and declared its intention to levy assessments for the Diamond Ridge Benefit Assessment District No. 1 (hereafter referred to as the "District") for the Fiscal Year commencing July 1, 2005 and ending June 30, 2006 pursuant to the provisions of the *Benefit Assessment Act of 1982, Chapter 6.4 of Part 1 of Division 2, Article 4 of the Government Code of California, beginning with Section 54703* (hereafter referred to as the "Act") to pay the costs and expenses of operating, maintaining, and servicing improvements and facilities located within public places within the boundaries of the District; and

WHEREAS, the Engineer has prepared and filed with the City Clerk, and the City Clerk has presented to the Council, the Engineer's Annual Levy Report (hereafter referred to as the "Report") for the District that describes the District and the proposed levy and collection of assessments upon eligible parcels of land within the District, and the Council did by previous Resolution approve such Report; and

WHEREAS, the City Council desires to levy and collect assessments against parcels of land within the District for the Fiscal Year commencing July 1, 2005 and ending June 30, 2006 to pay the costs and expenses of operating, maintaining, and servicing improvements and facilities located within the boundaries of the District; and

WHEREAS, the City and its assessment consultant have reviewed the provisions of Section XIII D of the California State Constitution and found that the proposed assessments comply with these provisions.

NOW, THEREFORE, BE IT HEREBY RESOLVED, DETERMINED, AND ORDERED BY THE CITY COUNCIL OF THE CITY OF SOLEDAD FOR THE DIAMOND RIDGE BENEFIT ASSESSMENT DISTRICT NO. 1 AS FOLLOWS:

Section 1 Following notice duly given, the City Council has held a full and fair Public Hearing regarding the District, the levy and collection of assessments, the Report prepared in connection therewith, and considered all oral and written statements, protests, and communications made or filed by interested persons regarding these matters.

Section 2 Based upon its review (and amendments, as applicable) of the Report, the City Council hereby finds and determines that:

- i) the land within the District will receive special benefit by the operation, maintenance, and servicing of improvements and facilities located in public places within the boundaries of the District; and
- ii) the District includes all of the lands so benefited, and

iii) the net amount to be assessed upon the lands within the District in accordance with the fee for the Fiscal Year commencing July 1, 2005 and ending June 30, 2006 is apportioned by a formula and method which fairly distributes the net amount among all eligible parcels in proportion to the estimated benefits to be received by each parcel from the improvements and services.

Section 3 The Report and assessments as presented to the City Council and on file in the Office of the City Clerk are hereby confirmed as filed.

Section 4 The maintenance, operation, and servicing of the improvements and appurtenant facilities shall be performed pursuant to the Act. The City Council hereby orders the proposed improvements to be made, which improvements are briefly described as follows. the maintenance and operation of the following described improvements of a local nature on public lands within said District including street sweeping, storm drain lines, including necessary cleaning, repairs, replacement, electric current, supervision, debris removal, engineering and supervision and any and all other items of work necessary and incidental for the proper maintenance and operation thereof. The Report describes all new improvements or substantial changes in existing improvements.

Section 5 The County Auditor of the County of Monterey shall enter on the County Assessment Roll opposite each eligible parcel of land the amount of levy so apportioned by the formula and method outlined in the Report, and such levies shall be collected at the same time and in the same manner as the County taxes are collected. After collection by the County, the net amount of the levy shall be paid to the City Treasurer

Section 6 The City Treasurer shall deposit all money representing assessments collected by the County for the District to the credit of a fund known as the "Improvement Fund, City of Soledad, Diamond Ridge Benefit Assessment District No. 1 and such monies shall be expended only for the maintenance, operation, and servicing improvements and facilities as described in Section 4

Section 7 The adoption of this Resolution constitutes the District levy for the Fiscal Year commencing July 1, 2005 and ending June 30, 2006.

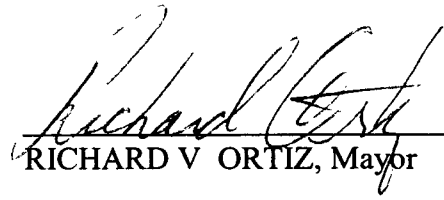
PASSED AND ADOPTED at a regular meeting of the City Council of the City of Soledad duly held on 6th day of July, 2005 by the following vote:

AYES, and in favor thereof, Councilmembers. Patricia Stephens, Mayor Pro Tem
Juan Saavedra, Mayor Richard Ortiz

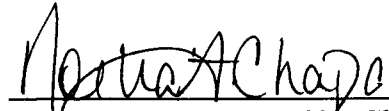
NOES, Councilmembers. None

ABSTAINED, Councilmembers None

ABSENT, Councilmembers. Christopher Bourke, Stefanie De La Rosa


RICHARD V. ORTIZ, Mayor

ATTEST


NOELIA F, CHAPA, City Clerk



July 12, 2005

Stephen Vagnini
Auditor-Controller
County of Monterey
Post Office Box 570
Salinas, California 93902

RE DIAMOND RIDGE BENEFIT ASSESSMENT DISTRICT NO 1, DIAMOND RIDGE
PARKS AND OPEN SPACE MAINTENANCE ASSESSMENT DISTRICT NO 1 AND
RANCHO SAN VICENTE PARKS AND OPEN SPACE MAINTENANCE
ASSESSMENT DISTRICT

Dear Mr Vagnini

Enclosed are two (2) sets each of Resolution No 3640, Resolution No 3641 and Resolution No 3642 with their corresponding Engineer's Reports for the Diamond Ridge Assessment District No 1, Diamond Ridge Parks and Open Space Maintenance Assessment District No 1 and Rancho San Vicente Parks and Open Space Maintenance Assessment District.

If you have any questions, please call me at 831/678-3963 Ext 112 or our Bond Counsel representative at MuniFinancial at 951-587-3500

Sincerely,

A handwritten signature in cursive script that reads "Lupe A. Martinez".

LUPE A. MARTINEZ
Deputy City Clerk

Enclosures



**CITY OF SOLEDAD
ENGINEER'S FINAL ANNUAL
LEVY REPORT**

**Diamond Ridge
Benefit Assessment District No. 1
(Diamond Ridge, Phase I)
Fiscal Year 2005/2006**



Corporate Office

27368 Via Industria
Suite 110
Temecula, CA 92590
Tel: (951) 587-3500
Tel (800) 755-MUNI (6864)
Fax: (951) 587-3510

Office Locations.

Anaheim, CA
Lancaster, CA
Los Angeles Regional Office
Oakland, CA

Phoenix, AZ
Sacramento, CA
Seattle, WA

www.muni.com

ENGINEER'S REPORT AFFIDAVIT
Diamond Ridge Benefit Assessment District No. 1
(Diamond Ridge, Phase I)

City of Soledad
Monterey County, State of California

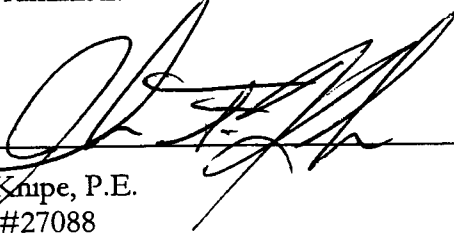
This Report describes the District including the improvements, budgets, parcels and assessments to be levied for Fiscal Year 2005/2006 as they existed at the time of the passage of the Resolution of Intention. Reference is hereby made to the Monterey County Assessor's maps for a detailed description of the lines and dimensions of parcels within the District. The undersigned respectfully submits the enclosed Report as directed by the City Council.

Dated this 17th day of May, 2005

MuniFinancial
Assessment Engineer
On Behalf of the City of Soledad

By Bill Moses

Bill Moses
District Administration Services

By 
John F. Knipe, P.E.
R. C. E. #27088



CITY CLERK'S CERTIFICATION
Diamond Ridge Benefit Assessment District No. 1
(Diamond Ridge, Phase I)

City of Soledad
Monterey County, State of California

I HEREBY CERTIFY that the enclosed Engineer's Report, together with the Assessment Diagram thereto attached, was filed with me on the 23rd day of May, 2005

NOELIA F CHAPA, City Clerk
City of Soledad, Monterey County, California

By: Noelia F Chapa

I HEREBY CERTIFY that the enclosed Engineer's Report, together with the Assessment Diagram thereto attached, was approved and confirmed by the City Council of the City of Soledad, California, on the 6th day of July, 2005

NOELIA F CHAPA, City Clerk
City of Soledad, Monterey County, California

By: Noelia F Chapa

I HEREBY CERTIFY THAT THE ENCLOSED Engineer's Report, together with the Assessment Diagram thereto attached, was filed with the County Auditor of the County of Monterey on the 12th day of July, 2005

NOELIA F CHAPA, City Clerk
City of Soledad, Monterey County, California

By: Noelia F Chapa

ENGINEER'S REPORT
Diamond Ridge Benefit Assessment District No. 1
(Diamond Ridge, Phase I)

TABLE OF CONTENTS

I. DESCRIPTION OF WORK.....	5
II. 2005/2006 BUDGET ESTIMATES	7
III. 2005/2006 ASSESSMENT ROLL	8
IV. METHOD OF APPORTIONMENT	15
IV DISTRICT DIAGRAM.	18

DESCRIPTION OF WORK

Diamond Ridge Benefit Assessment District No. 1 (Diamond Ridge, Phase I)

1. Description of Work

DIAMOND RIDGE BENEFIT ASSESSMENT DISTRICT NO. 1 is generally described as a district bounded on the north by the northerly boundary of Miravale, Phase I Tract Map, on the south by Gabilan Drive, on the east by Orchard Lane and on the west by Toledo Street.

Maintenance and operation of the following described improvements are of a local nature and are located on public lands within lands within said district. Maintenance and operation includes street sweeping, storm drain lines, including necessary cleaning, repairs, replacement, electric current, supervision, debris removal, engineering and inspection and any and all other items of work necessary and incidental for the proper maintenance and operation thereof. Maintenance and operation also includes all additions, improvements and enlargements thereto which may hereafter be made on the previously described work within the following streets and on appurtenant improvement plans:

Maintenance and operations as described above are for the improvements located on the following streets.

Toledo Street (East Half), Orchard Lane, Gabilan Drive, San Antonio, Santa Ynez, San Miguel, and Los Flores Street: All previously described streets are shown on that certain map titled "Diamond Ridge, Phase I, Benefit Assessment District", on file with the City Clerk.

Maintenance and operation of the following described improvements are of a local nature and are located on public lands within said district. Maintenance and operation includes storm retention pond silt removal, bank stabilization and restoring percolation, including necessary cleaning, repairs, replacement, electric current, supervision, debris removal, pest abatement, engineering and inspection and any and all other items of work necessary and incidental for the proper maintenance and operation thereof. Maintenance and operation also includes all additions, improvements and enlargements thereto which may hereafter be made on the previously described work within the following area and on appurtenant improvement plans.

Storm Water Retention Pond: Improvements as shown on the approved improvement plans titled, " Miravale Estates, Phase I" and any subsequent revisions and as on the approved Miravale Estates Tentative Map within Parcel "A"

Incidental costs including contingencies, and assessment district incidentals including engineering, printing, and notices to property owners, collection costs, legal fees, administration and supervision, are assessed to the District on the same basis as the improvements specified above.

2005/2006 BUDGET ESTIMATES
Diamond Ridge Benefit Assessment District No. 1
(Diamond Ridge, Phase I)

Expenditure Items	2005/06 Budget
Percolation Pond - routine maintenance and dredging (\$12,000 reserve each year, not including landscaping \$230,000 reserve maximum)	\$12,000 00
Street Sweeping - once a week	19,000 00
Storm Drain Repair/Maint. (completed every 3 years, \$15,000 - \$5,000 reserve each year)	5,000 00
Engineering Plans & Specifications for Maintenance/Repair - \$5,000 over 5 years, \$1,000 reserve each year	1,000 00
City of Soledad Inspection and Overhead	4,000 00
Reserve Collection / (Transfer)	9,674 58
Total Direct Expenses / Adjustments	\$50,674.58
City Administration (6%+/-)	2,460 00
Contingency (15%+/-)	6,150 00
District Administration	5,000 00
Printing & Advertising	1,000 00
Collection Fees	5,205 00
Total Administration Expenses	\$19,815.00
TOTAL OF EXPENSES	\$70,489.58
Beginning Reserve Balance	\$7,540 16
Reserve Fund Activity	9,674 58
Estimated Ending Reserve Balance	\$17,214 74

2005/2006 ASSESSMENT ROLL
Diamond Ridge Benefit Assessment District No. 1
(Diamond Ridge, Phase I)

ASSESSMENT NUMBER	ASSESSOR'S PARCEL NO	ASSESSMENT UNITS	ASSESSMENT 2005/2006	COLLECTION FEE	TOTAL LEVY
1	022-442-001	1	\$188.14	\$15 00	\$203 14
2	022-442-002	1	188 14	15 00	203.14
3	022-442-003	1	188 14	15 00	203 14
4	022-442-004	1	188 14	15 00	203 14
5	022-442-005	1	188 14	15 00	203 14
6	022-442-006	1	188 14	15.00	203 14
7	022-442-007	1	188 14	15.00	203.14
8	022-442-008	1	188.14	15 00	203 14
9	022-442-009	1	188 14	15 00	203 14
10	022-442-010	1	188.14	15.00	203 14
11	022-442-011	1	188 14	15.00	203 14
12	022-442-012	1	188.14	15.00	203.14
13	022-442-013	1	188.14	15.00	203.14
14	022-442-014	1	188 14	15.00	203.14
15	022-442-015	1	188.14	15.00	203.14
16	022-442-016	1	188.14	15.00	203.14
17	022-442-017	1	188 14	15.00	203.14
18	022-442-018	1	188.14	15 00	203 14
19	022-442-019	1	188 14	15.00	203 14
20	022-442-020	1	188 14	15 00	203.14
21	022-442-021	1	188 14	15.00	203.14
22	022-442-022	1	188 14	15 00	203 14
23	022-442-023	1	188 14	15 00	203.14
24	022-442-024	1	188 14	15.00	203.14
25	022-442-025	1	188 14	15.00	203.14
26	022-442-026	1	188.14	15.00	203.14
27	022-442-027	1	188 14	15.00	203 14
28	022-442-028	1	188.14	15 00	203.14
29	022-442-029	1	188 14	15.00	203 14
30	022-442-030	1	188 14	15.00	203.14
31	022-442-031	1	188 14	15 00	203.14
32	022-442-032	1	188 14	15 00	203.14
33	022-442-033	1	188 14	15 00	203.14
34	022-442-034	1	188 14	15.00	203.14
35	022-442-035	1	188.14	15.00	203 14
36	022-442-036	1	188 14	15 00	203.14
37	022-442-037	1	188 14	15.00	203.14
38	022-442-038	1	188 14	15.00	203.14
39	022-442-039	1	188 14	15 00	203.14
40	022-442-040	1	188 14	15 00	203 14
41	022-442-041	1	188 14	15 00	203.14
42	022-442-042	1	188 14	15.00	203 14
43	022-442-043	1	188 14	15 00	203 14
44	022-442-044	1	188 14	15 00	203.14
45	022-442-045	1	188 14	15 00	203.14
46	022-442-046	1	188 14	15 00	203 14

ASSESSMENT NUMBER	ASSESSOR'S PARCEL NO	ASSESSMENT UNITS	ASSESSMENT 2005/2006	COLLECTION FEE	TOTAL LEVY
47	022-442-047	1	188 14	15 00	203 14
48	022-442-048	1	188 14	15.00	203 14
49	022-442-049	1	188.14	15.00	203 14
50	022-442-050	1	188 14	15.00	203 14
51	022-442-051	1	188 14	15.00	203 14
52	022-442-052	1	188 14	15.00	203 14
53	022-442-053	1	188 14	15 00	203 14
54	022-442-054	1	188.14	15.00	203 14
55	022-442-055	1	188 14	15 00	203 14
56	022-442-056	1	188.14	15.00	203 14
57	022-442-057	1	188 14	15.00	203 14
58	022-442-058	1	188 14	15 00	203 14
59	022-442-059	1	188.14	15.00	203 14
60	022-442-060	1	188 14	15.00	203 14
61	022-442-061	1	188.14	15 00	203 14
62	022-442-062	1	188 14	15.00	203 14
63	022-442-063	1	188 14	15.00	203 14
64	022-442-064	1	188 14	15.00	203.14
65	022-442-065	1	188.14	15.00	203 14
66	022-442-066	1	188 14	15.00	203.14
67	022-442-067	1	188.14	15.00	203.14
68	022-442-068	1	188.14	15.00	203 14
69	022-442-069	1	188 14	15.00	203.14
70	022-442-070	1	188.14	15.00	203 14
71	022-442-071	1	188.14	15 00	203.14
72	022-442-072	1	188.14	15.00	203 14
73	022-442-073	1	188.14	15.00	203.14
74	022-442-074	1	188.14	15.00	203.14
75	022-442-075	1	188.14	15.00	203.14
76	022-442-076	1	188.14	15.00	203 14
77	022-442-077	1	188.14	15.00	203.14
78	022-442-078	1	188.14	15.00	203 14
79	022-442-079	1	188.14	15.00	203 14
80	022-442-080	1	188.14	15.00	203.14
81	022-442-081	1	188 14	15 00	203 14
82	022-442-082	1	188.14	15.00	203 14
83	022-442-083	1	188.14	15.00	203.14
84	022-442-084	1	188 14	15.00	203 14
85	022-442-085	1	188.14	15.00	203.14
86	022-442-086	1	188 14	15.00	203 14
87	022-442-087	1	188.14	15.00	203 14
88	022-442-088	1	188 14	15.00	203.14
89	022-442-089	1	188.14	15.00	203 14
90	022-442-090	1	188.14	15.00	203.14
91	022-442-091	1	188 14	15.00	203.14
92	022-442-092	1	188.14	15.00	203 14
93	022-442-093	1	188 14	15 00	203 14
94	022-442-094	1	188.14	15 00	203 14
95	022-442-095	1	188.14	15.00	203 14
96	022-442-096	1	188 14	15.00	203 14
97	022-442-097	1	188.14	15.00	203 14
98	022-442-098	1	188.14	15 00	203 14
99-1	022-481-001	1	188.14	15.00	203 14
99-2	022-481-002	1	188.14	15.00	203 14
99-3	022-481-003	1	188.14	15.00	203 14
99-4	022-481-004	1	188 14	15.00	203 14

ASSESSMENT NUMBER	ASSESSOR'S PARCEL NO	ASSESSMENT UNITS	ASSESSMENT 2005/2006	COLLECTION FEE	TOTAL LEVY
99-5	022-481-005	1	188 14	15 00	203.14
99-6	022-481-006	1	188 14	15 00	203.14
99-7	022-481-007	1	188 14	15.00	203.14
99-8	022-481-008	1	188 14	15 00	203 14
99-9	022-481-009	1	188 14	15 00	203 14
99-10	022-481-010	1	188 14	15 00	203 14
99-11	022-481-011	1	188 14	15 00	203 14
99-12	022-481-012	1	188 14	15.00	203.14
99-13	022-481-013	1	188 14	15.00	203 14
99-14	022-481-014	1	188 14	15.00	203 14
99-15	022-481-015	1	188 14	15.00	203.14
99-16	022-481-016	1	188 14	15.00	203.14
99-17	022-481-017	1	188 14	15.00	203.14
99-18	022-481-018	1	188 14	15.00	203 14
99-19	022-481-019	1	188 14	15.00	203 14
99-20	022-481-020	1	188 14	15 00	203 14
99-21	022-481-021	1	188 14	15.00	203.14
99-22	022-481-022	1	188 14	15.00	203.14
99-23	022-481-023	1	188 14	15.00	203.14
99-24	022-481-024	1	188 14	15.00	203 14
99-25	022-481-025	1	188 14	15.00	203 14
99-26	022-481-026	1	188 14	15 00	203.14
99-27	022-481-027	1	188 14	15.00	203.14
99-28	022-481-028	1	188.14	15.00	203.14
99-29	022-481-029	1	188 14	15 00	203 14
99-30	022-481-030	1	188 14	15 00	203.14
99-31	022-481-031	1	188 14	15.00	203.14
99-32	022-481-032	1	188 14	15.00	203.14
99-33	022-481-033	1	188 14	15.00	203 14
99-34	022-481-034	1	188 14	15.00	203.14
99-35	022-481-035	1	188 14	15.00	203 14
99-36	022-481-036	1	188 14	15 00	203.14
99-37	022-481-037	1	188 14	15.00	203.14
99-38	022-481-038	1	188 14	15.00	203.14
99-39	022-481-039	1	188 14	15.00	203 14
99-40	022-481-040	1	188.14	15.00	203 14
99-41	022-481-041	1	188 14	15.00	203.14
99-42	022-481-042	1	188 14	15.00	203.14
99-43	022-481-043	1	188 14	15.00	203.14
99-44	022-481-044	1	188 14	15 00	203 14
99-45	022-481-045	1	188 14	15.00	203.14
99-46	022-481-046	1	188 14	15 00	203.14
99-47	022-481-047	1	188 14	15.00	203.14
99-48	022-481-048	1	188.14	15 00	203.14
99-49	022-481-049	1	188 14	15.00	203.14
99-50	022-481-050	1	188 14	15 00	203 14
99-51	022-481-051	1	188 14	15 00	203 14
99-52	022-481-052	1	188 14	15 00	203 14
99-53	022-481-053	1	188 14	15.00	203.14
99-54	022-481-054	1	188 14	15 00	203.14
99-55	022-481-055	1	188 14	15.00	203 14
99-56	022-481-056	1	188 14	15.00	203 14
99-57	022-481-057	1	188 14	15 00	203 14
99-58	022-481-058	1	188 14	15 00	203 14

ASSESSMENT NUMBER	ASSESSOR'S PARCEL NO	ASSESSMENT UNITS	ASSESSMENT 2005/2006	COLLECTION FEE	TOTAL LEVY
99-59	022-481-059	1	188 14	15 00	203 14
99-60	022-481-060	1	188 14	15 00	203 14
99-61	022-481-061	1	188 14	15.00	203 14
99-62	022-481-062	1	188 14	15 00	203.14
99-63	022-481-063	1	188 14	15 00	203 14
99-64	022-481-064	1	188.14	15 00	203.14
99-65	022-481-065	1	188 14	15 00	203 14
99-66	022-481-066	1	188.14	15.00	203.14
99-67	022-481-067	1	188 14	15.00	203.14
99-68	022-481-068	1	188 14	15.00	203.14
99-69	022-481-069	1	188.14	15.00	203.14
99-70	022-481-070	1	188.14	15.00	203.14
99-71	022-481-071	1	188.14	15 00	203.14
99-72	022-481-072	1	188.14	15 00	203.14
99-73	022-481-073	1	188 14	15 00	203.14
99-74	022-481-074	1	188 14	15.00	203.14
99-75	022-481-075	1	188.14	15.00	203.14
99-76	022-481-076	1	188 14	15.00	203.14
99-77	022-481-077	1	188 14	15.00	203.14
99-78	022-481-078	1	188 14	15 00	203.14
99-79	022-481-079	1	188 14	15.00	203.14
99-80	022-481-080	1	188 14	15.00	203 14
99-81	022-481-081	1	188.14	15.00	203.14
99-82	022-481-082	1	188.14	15.00	203.14
99-83	022-481-083	1	188 14	15.00	203.14
99-84	022-481-084	1	188 14	15.00	203.14
99-85	022-481-085	1	188 14	15 00	203.14
99-86	022-481-086	1	188.14	15.00	203 14
99-87	022-481-087	1	188 14	15 00	203 14
99-88	022-481-088	1	188 14	15 00	203 14
99-89	022-481-089	1	188 14	15 00	203 14
99-90	022-481-090	1	188 14	15.00	203 14
99-91	022-482-001	1	188 14	15 00	203 14
99-92	022-482-002	1	188.14	15.00	203.14
99-93	022-482-014	1	188 14	15.00	203.14
99-94	022-482-015	1	188 14	15.00	203.14
99-95	022-482-016	1	188.14	15.00	203.14
99-96	022-482-017	1	188 14	15 00	203.14
99-97	022-482-018	1	188 14	15.00	203.14
99-98	022-482-019	1	188 14	15 00	203.14
99-99	022-482-020	1	188 14	15.00	203.14
99-100	022-482-021	1	188 14	15 00	203 14
99-101	022-482-022	1	188 14	15.00	203.14
99-102	022-482-023	1	188 14	15.00	203.14
99-103	022-482-024	1	188 14	15 00	203 14
99-104	022-482-025	1	188 14	15 00	203 14
99-105	022-482-026	1	188 14	15.00	203 14
99-106	022-482-027	1	188 14	15 00	203 14
99-107	022-482-028	1	188 14	15 00	203 14
99-108	022-482-029	1	188 14	15.00	203 14
99-109	022-482-030	1	188 14	15.00	203.14
99-110	022-482-031	1	188 14	15 00	203 14
99-111	022-482-032	1	188 14	15.00	203 14
99-112	022-482-033	1	188 14	15 00	203 14

ASSESSMENT NUMBER	ASSESSOR'S PARCEL NO	ASSESSMENT UNITS	ASSESSMENT 2005/2006	COLLECTION FEE	TOTAL LEVY
99-113	022-482-034	1	188 14	15 00	203 14
99-185	022-482-036	1	188 14	15.00	203.14
99-186	022-482-037	1	188 14	15.00	203 14
99-187	022-482-038	1	188 14	15 00	203.14
99-188	022-482-039	1	188 14	15 00	203 14
99-189	022-482-040	1	188 14	15 00	203.14
99-190	022-482-041	1	188 14	15 00	203 14
99-191	022-482-042	1	188 14	15 00	203 14
99-192	022-482-043	1	188 14	15 00	203 14
99-193	022-482-044	1	188 14	15 00	203.14
99-194	022-482-045	1	188 14	15.00	203 14
99-195	022-482-046	1	188.14	15.00	203 14
99-196	022-482-047	1	188 14	15.00	203.14
99-197	022-482-048	1	188.14	15.00	203.14
99-198	022-482-049	1	188 14	15.00	203.14
99-199	022-482-050	1	188 14	15.00	203.14
99-200	022-482-051	1	188 14	15.00	203.14
99-201	022-482-052	1	188 14	15.00	203.14
99-202	022-482-053	1	188 14	15 00	203.14
99-203	022-482-054	1	188.14	15.00	203.14
99-204	022-482-055	1	188.14	15.00	203 14
99-205	022-482-056	1	188 14	15 00	203.14
99-206	022-482-057	1	188 14	15 00	203.14
99-207	022-482-058	1	188 14	15.00	203.14
99-208	022-482-059	1	188 14	15 00	203.14
99-209	022-482-060	1	188 14	15.00	203 14
99-210	022-482-061	1	188.14	15 00	203 14
99-211	022-482-062	1	188 14	15.00	203.14
99-212	022-482-063	1	188 14	15.00	203.14
99-213	022-482-064	1	188.14	15.00	203.14
99-214	022-482-065	1	188 14	15.00	203.14
99-215	022-482-066	1	188 14	15.00	203.14
99-216	022-482-067	1	188 14	15.00	203.14
99-217	022-482-068	1	188 14	15.00	203 14
99-218	022-482-069	1	188 14	15.00	203.14
99-219	022-482-070	1	188 14	15.00	203.14
99-220	022-482-071	1	188 14	15.00	203.14
99-221	022-482-072	1	188 14	15.00	203.14
99-222	022-482-073	1	188.14	15 00	203.14
99-223	022-482-074	1	188 14	15 00	203.14
99-224	022-482-075	1	188 14	15 00	203.14
99-225	022-482-076	1	188 14	15.00	203.14
99-226	022-482-077	1	188.14	15.00	203.14
99-227	022-482-078	1	188 14	15.00	203 14
99-228	022-482-079	1	188 14	15 00	203.14
99-229	022-482-080	1	188 14	15 00	203.14
99-230	022-482-081	1	188 14	15 00	203 14
99-231	022-482-082	1	188 14	15.00	203 14
99-232	022-482-083	1	188 14	15.00	203 14
99-233	022-482-084	1	188 14	15.00	203 14
99-234	022-482-085	1	188 14	15.00	203 14
99-235	022-482-086	1	188 14	15 00	203 14
99-236	022-482-087	1	188 14	15.00	203 14
99-237	022-482-088	1	188 14	15 00	203 14

ASSESSMENT NUMBER	ASSESSOR'S PARCEL NO	ASSESSMENT UNITS	ASSESSMENT 2005/2006	COLLECTION FEE	TOTAL LEVY
99-238	022-482-089	1	188 14	15 00	203 14
99-239	022-482-090	1	188 14	15 00	203.14
99-240	022-482-091	1	188 14	15.00	203 14
99-241	022-482-092	1	188 14	15.00	203 14
99-242	022-482-093	1	188 14	15.00	203.14
99-243	022-482-094	1	188 14	15 00	203 14
99-244	022-482-095	1	188 14	15 00	203 14
99-245	022-482-096	1	188 14	15.00	203.14
99-246	022-482-097	1	188 14	15 00	203 14
99-247	022-482-098	1	188 14	15 00	203 14
99-248	022-482-099	1	188 14	15.00	203.14
99-249	022-482-100	1	188 14	15 00	203 14
99-114	022-483-001	1	188 14	15.00	203 14
99-115	022-483-002	1	188 14	15 00	203.14
99-116	022-483-003	1	188 14	15.00	203.14
99-117	022-483-004	1	188 14	15 00	203 14
99-118	022-483-005	1	188 14	15.00	203.14
99-119	022-483-006	1	188 14	15.00	203 14
99-120	022-483-007	1	188 14	15 00	203 14
99-121	022-483-008	1	188 14	15.00	203.14
99-122	022-483-009	1	188 14	15.00	203.14
99-123	022-483-010	1	188 14	15.00	203 14
99-124	022-483-011	1	188 14	15 00	203 14
99-125	022-483-012	1	188 14	15 00	203 14
99-126	022-483-013	1	188.14	15.00	203 14
99-127	022-483-014	1	188 14	15.00	203.14
99-128	022-483-015	1	188 14	15.00	203 14
99-129	022-483-016	1	188 14	15.00	203 14
99-130	022-483-017	1	188 14	15 00	203 14
99-131	022-483-018	1	188 14	15.00	203 14
99-132	022-483-019	1	188 14	15 00	203 14
99-133	022-483-020	1	188 14	15 00	203.14
99-134	022-483-021	1	188 14	15 00	203 14
99-135	022-483-022	1	188 14	15.00	203 14
99-136	022-483-023	1	188 14	15 00	203 14
99-137	022-483-024	1	188 14	15 00	203.14
99-138	022-483-025	1	188 14	15 00	203.14
99-139	022-483-026	1	188 14	15 00	203.14
99-140	022-483-027	1	188 14	15 00	203.14
99-141	022-483-028	1	188 14	15 00	203.14
99-142	022-483-029	1	188 14	15 00	203.14
99-143	022-483-030	1	188 14	15.00	203.14
99-144	022-483-031	1	188 14	15.00	203.14
99-145	022-483-032	1	188 14	15.00	203 14
99-146	022-483-033	1	188 14	15 00	203.14
99-147	022-483-034	1	188 14	15.00	203.14
99-148	022-483-035	1	188 14	15 00	203.14
99-149	022-483-036	1	188 14	15 00	203.14
99-150	022-483-037	1	188 14	15 00	203.14
99-151	022-483-038	1	188.14	15.00	203.14
99-152	022-483-039	1	188 14	15 00	203.14
99-153	022-483-040	1	188 14	15 00	203.14
99-154	022-483-041	1	188 14	15 00	203.14
99-155	022-483-042	1	188 14	15 00	203.14

ASSESSMENT NUMBER	ASSESSOR'S PARCEL NO.	ASSESSMENT UNITS	ASSESSMENT 2005/2006	COLLECTION FEE	TOTAL LEVY
99-156	022-483-043	1	188.14	15.00	203.14
99-157	022-483-044	1	188.14	15.00	203.14
99-158	022-483-045	1	188.14	15.00	203.14
99-159	022-483-046	1	188.14	15.00	203.14
99-160	022-483-047	1	188.14	15.00	203.14
99-161	022-483-048	1	188.14	15.00	203.14
99-162	022-483-049	1	188.14	15.00	203.14
99-163	022-483-050	1	188.14	15.00	203.14
99-164	022-483-051	1	188.14	15.00	203.14
99-165	022-483-052	1	188.14	15.00	203.14
99-166	022-483-053	1	188.14	15.00	203.14
99-167	022-483-054	1	188.14	15.00	203.14
99-168	022-483-055	1	188.14	15.00	203.14
99-169	022-483-056	1	188.14	15.00	203.14
99-170	022-483-057	1	188.14	15.00	203.14
99-171	022-483-058	1	188.14	15.00	203.14
99-172	022-483-059	1	188.14	15.00	203.14
99-173	022-483-060	1	188.14	15.00	203.14
99-174	022-483-061	1	188.14	15.00	203.14
99-175	022-483-062	1	188.14	15.00	203.14
99-176	022-483-063	1	188.14	15.00	203.14
99-177	022-483-064	1	188.14	15.00	203.14
99-178	022-483-065	1	188.14	15.00	203.14
99-179	022-483-066	1	188.14	15.00	203.14
99-180	022-483-067	1	188.14	15.00	203.14
99-181	022-483-068	1	188.14	15.00	203.14
99-182	022-483-069	1	188.14	15.00	203.14
99-183	022-483-070	1	188.14	15.00	203.14
99-184	022-483-071	1	188.14	15.00	203.14
TOTAL		347	\$65,284.58	\$5,205.00	\$70,489.58

METHOD OF APPORTIONMENT

Diamond Ridge Benefit Assessment District No. 1 (Diamond Ridge, Phase I)

The District is assessed, on the basis of total development units generated, for the maintenance and operation of the Diamond Ridge Benefit Assessment District No. 1 including incidentals and appurtenances and shall include all the costs of the improvements described herein.

GENERAL RULES

- 1 All costs associated with the maintenance and operation of the Diamond Ridge Benefit Assessment District No. 1 improvements including the Engineer's Report, printing and advertising of assessment notices and legal fees shall be spread to all parcels on a pro rata development unit basis.
- 2 Chapter 6.4 of Division 2 of the California Government Code, the Benefit Assessment Act of 1982, permits the establishment of assessment districts by agencies for the purpose of financing the operation, maintenance and servicing of drainage, flood control, street lighting and street improvements, and installation and improvement of drainage and flood improvements. Section 54711 of the Benefit Assessment Act of 1982 requires that assessments be levied according to benefit derived from the provided service. In addition, Article XIID, Section 4(a) of the California Constitution limits the amounts of any assessment to the proportional special benefit conferred on the property

Article XIID provides that publicly owned properties must be assessed unless there is clear and convincing evidence that those properties receive no special benefit from the assessment. Excepted from the assessment would be the areas of public streets, public avenues, public lanes, public roads, public drives, public courts, public alleys, public easements and right-of-way, public greenbelts and public parkways, and that portion of public property that is not developed and used for business purposes similar to private commercial, industrial, and institutional activities.

The improvements to be maintained and operated as a result of the formation of the Diamond Ridge Benefit Assessment District No. 1 are either in existence or scheduled to be installed simultaneously with the development of residential units within the District. All such improvements are being installed within or in areas in close proximity to the proposed developed residential lots.

As a result of the foregoing, the developed residential lots will receive 100% of the special benefits of the operation and maintenance of drainage, flood control, street lighting, and street improvements. These special benefits include enhanced neighborhood health and safety, and improved quality of life, generated when drainage, flood control and street improvements are in place, improved, operable, safe, clean, and maintained. In short, maintenance and operation of the proposed improvements will provide beautification, protection of improved property, enhanced comfort and increase the desirability of the immediate surroundings of the residential units within the District.

Due to the configuration and proximity of the proposed or existing improvements within the District in relation to the developed lots, and the nature of the benefits derived therefrom, undeveloped lots in close proximity to the District (future Phase II and III of Diamond Ridge and future residential/commercial development south of Gabilan Drive between Parcel "A" and Orchard Lane) will not enjoy special benefits described herein. Moreover, because of the location of the contemplated improvements either within or close to the District itself, there is no general benefit to properties outside the District or the community as a whole, or a general benefit that is so negligible, it cannot be calculated for purposes of assessment.

As such, all costs associated with the maintenance and operation of Diamond Ridge Benefit Assessment District No. 1 improvements, including incidentals and appurtenances, shall be spread to all parcels within the District on a development unit basis. Developed parcels are those parcels on which a final subdivision map has been filed, and which can obtain building permits as of the date of the final hearing on assessment. Said parcels also abut or obtain primary access from a public street.

3 In order to determine the appropriate assessment for each developed parcel, a budget for operation and maintenance costs associated with planned improvements in the entire Diamond Ridge Subdivision Project was prepared. In some instances, the total cost of operation and maintenance of a given improvement must be collected on an annual basis. Since the developed parcels in the District are the only parcels that derive special benefit from such activities, they initially must bear the entire cost of operation and maintenance. It is anticipated that assessments levied in this manner will be decreased as subsequent portions of the Subdivision develop, derive benefit from the operation and maintenance of such improvements, and form new Benefit Assessment Districts. In other instances, assessments have been prorated to reflect the District's proportionate share of the costs of a given operation and maintenance activity

4 Factored development unit calculations for residential areas are as follows.

Low Density Single Family Residential	=	1 0 Unit
Future Medium Density Residential	=	0 8 Unit

5 In addition to a City fee for annual administration of the District, all assessed parcels shall be assessed an additional \$15 00 for processing the annual assessments through the County Auditor/Controller.

6. All assessments shall be adjusted annually based on a comparison of the Consumer Price Index of the San Francisco-Oakland-San Jose area for the previous year/month to the Consumer Price Index for the year/month assessments are determined in the future. The benchmark month is April.

DISTRICT DIAGRAM
Diamond Ridge Benefit Assessment District No. 1
(Diamond Ridge, Phase I)

SEE SHEET 1
SEE INSERT BELOW

FILED IN THE OFFICE OF THE CITY CLERK OF THE CITY OF SOLDADO, COUNTY OF
 MONTEREY, STATE OF CALIFORNIA THIS _____ DAY OF _____ 200__.

CITY CLERK OF THE CITY OF SOLDADO

RECORDED IN THE OFFICE OF THE SUPERINTENDENT OF STREETS OF THE CITY OF
 SOLDADO, COUNTY OF MONTEREY, STATE OF CALIFORNIA THIS _____ DAY OF
 _____ 200__.

SUPERINTENDENT OF STREETS CITY OF SOLDADO

AN ASSESSMENT WAS MADE BY THE CITY COUNCIL OF THE CITY OF SOLDADO
 OF SOLDADO, COUNTY OF MONTEREY, STATE OF CALIFORNIA, ON THE LANDS, PLOTS AND
 PARCELS OF LAND SHOWN ON THE ASSESSMENT MAP, SAID MAP BEING THE
 ASSESSMENT MAP OF THE CITY OF SOLDADO, COUNTY OF MONTEREY, STATE OF
 CALIFORNIA, FOR THE YEAR _____ 200__. THE ASSESSOR OF THE SUPERINTENDENT
 OF STREETS OF THE CITY OF SOLDADO, COUNTY OF MONTEREY, STATE OF
 CALIFORNIA, HAS CAUSED TO BE RECORDED IN THE OFFICE OF THE SUPERINTENDENT
 OF STREETS OF THE CITY OF SOLDADO, COUNTY OF MONTEREY, STATE OF
 CALIFORNIA, THIS ASSESSMENT MAP, SAID MAP BEING THE ASSESSMENT MAP OF
 THE CITY OF SOLDADO, COUNTY OF MONTEREY, STATE OF CALIFORNIA, FOR THE
 YEAR _____ 200__. THE ASSESSOR OF THE SUPERINTENDENT OF STREETS
 OF THE CITY OF SOLDADO, COUNTY OF MONTEREY, STATE OF CALIFORNIA, HAS
 CAUSED TO BE RECORDED IN THE OFFICE OF THE SUPERINTENDENT OF STREETS
 OF THE CITY OF SOLDADO, COUNTY OF MONTEREY, STATE OF CALIFORNIA, THIS
 ASSESSMENT MAP, SAID MAP BEING THE ASSESSMENT MAP OF THE CITY OF
 SOLDADO, COUNTY OF MONTEREY, STATE OF CALIFORNIA, FOR THE YEAR _____
 200__.

CITY CLERK OF THE CITY OF SOLDADO

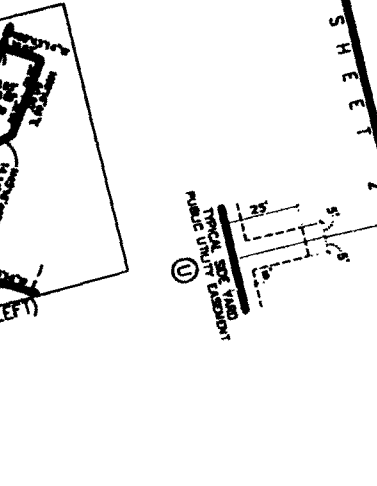
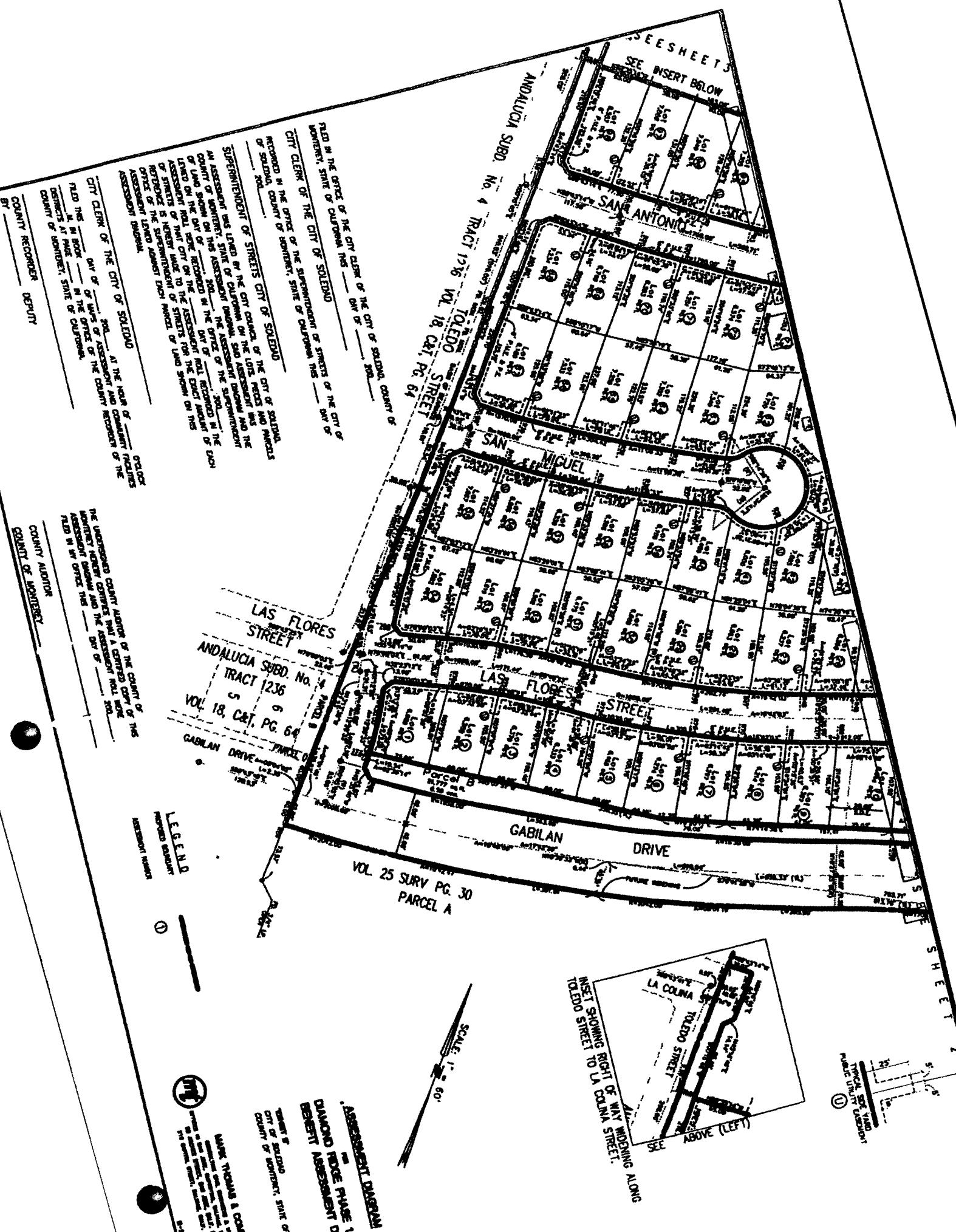
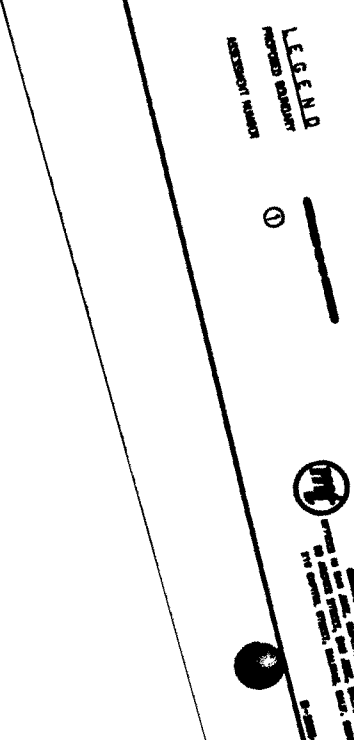
AT THE HOUR OF _____ O'CLOCK
 OF THE DAY OF _____ 200__, IN THE OFFICE OF THE COUNTY RECORDER OF THE
 COUNTY OF MONTEREY, STATE OF CALIFORNIA.

COUNTY RECORDER DEPUTY

THE UNDERSIGNED COUNTY AUDITOR OF THE COUNTY OF THE
 COUNTY OF MONTEREY, STATE OF CALIFORNIA, HAS CAUSED TO BE RECORDED IN
 THE OFFICE OF THE COUNTY RECORDER OF THE COUNTY OF MONTEREY, STATE OF
 CALIFORNIA, THIS ASSESSMENT MAP, SAID MAP BEING THE ASSESSMENT MAP OF
 THE CITY OF SOLDADO, COUNTY OF MONTEREY, STATE OF CALIFORNIA, FOR THE
 YEAR _____ 200__.

COUNTY AUDITOR

COUNTY OF MONTEREY



SHEET 2